

匠

技・美・こだわり



FALITH
SCISSORS

Focus B Series

This is the new series of Focus scissors. These scissors are smoother than the WFC system which uses bearings, so you can use them for a long time without your hands getting tired. They have a nice grip, so even stylists with small hands can use them easily.

FL2B-57 / 62

- WET/CRAB CUT ets
- Material:Cobalt
- Handle of material:SUS304
- Convex edge,3D Handle

FL2B-57 Inchi:5.75 A:69 mm B:90mm Weight:about 53 g

FL2B-62 Inchi:6.25 A:79 mm B:90mm Weight:about 58 g

※ Left-handed version also available.



W.F.C system

This system provides movement with absolutely ZERO friction. It's a one-of-a-kind design.

Focus Series

The Focus series is named just so because they offer a smooth cut, are easy to use and can be used for a long time without any discomfort.

FH-575 / 625

- WET/CRAB CUT ets
- Material:Cobalt
- Handle of material:SUS304
- Convex edge,3D Handle

FH-575 Inchi:5.75 A:70mm B:90mm Weight:about 48 g

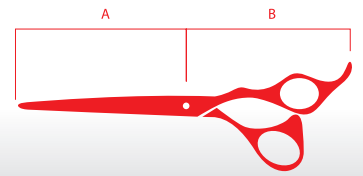
FH-625 Inchi:6.25 A:80mm B:90mm Weight:about 52 g

※ Left-handed version also available.



F.C system

This system provides movement with absolutely ZERO friction. It's a one-of-a-kind design.



Nade Series

Named after the Egyptian Goddess, Nade, these scissors are the sharpest in our collection. They perform without any kinks offering a completely smooth cut.

NI-55 / 60

- DRY/WET/ALL CUT
- Material:Cobalt
- Handle of material:SUS304
- Convex edge,3D Handle

NI-55 Inchi:5.5 A:67mm B:100mm Weight:about 57 g

NI-60 Inchi:6.0 A:77mm B:100mm Weight:about 61 g

※ Left-handed version also available.



NM-55 / 60

- DRY/WET/ALL CUT
- Material:Cobalt
- Handle of material: SUS304
- Convex edge,Opposing Handle

NM-55 Inchi:5.5 A:67mm B:93mm Weight:about 54 g

NM-60 Inchi:6.0 A:77mm B:93mm Weight:about 58 g

※ Left-handed version also available.



NS-55 / 60

- DRY/WET/ALL CUT
- Material:Cobalt
- Handle of material:SUS304
- Convex edge,Offset Handle

NS-55 Inchi:5.5 A:67mm B:90mm Weight:about 55 g

NS-60 Inchi:6.0 A:70mm B:90mm Weight:about 58 g



Dio Series

Please enjoy the way the Dio scissors move through the hair as elegantly as soft music when performing a slide cut.

DI-55 / 60

- DRY/SLIDE CUT ets
- Material:Cobalt
- Handle of material:SUS304
- Convex edge,3D Handle

DI-55 Inchi:5.5 A:67mm B:100mm Weight:about 54 g

DI-60 Inchi:6.0 A:74mm B:100mm Weight:about 59 g

※ Left-handed version also available.



DM-55 / 60

- DRY/SLIDE CUT ets
- Material:Cobalt
- Handle of material:SUS304
- Convex edge,Opposing Handle

DM-55 Inchi:5.5 A:67mm B:94mm Weight:about 54 g

DM-60 Inchi:6.0 A:74mm B:94mm Weight:about 59 g

※ Left-handed version also available.



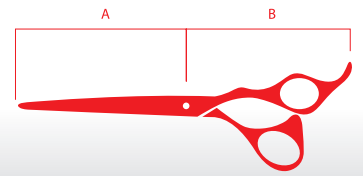
DS-55 / 60

- DRY/SLIDE CUT ets
- Material:Cobalt
- Handle of material:SUS304
- Convex edge,Offset Handle

DS-55 Inchi:5.5 A:67mm B:97mm Weight:about 54 g

DS-60 Inchi:6.0 A:74mm B:97mm Weight:about 54 g





Amos Series

Amos, which means the pursuit of beauty, has a sophisticated form and magically hits any hand perfectly.

AH-55 / 60

- DRY/WET/CRAB CUT ets
- Material:Cobalt
- Handle of material:SUS304
- Convex edge,3D Handle

AH-55 Inchi:5.5 A:67mm B:93mm Weight:about 53g

AH-60 Inchi:6.0 A:77mm B:93mm Weight:about 58g

※ Left-handed version also available.



Archi Series

The Archi series boasts a beautiful form. The arch, which is reminiscent of a bridge arching over a river, also somehow fits perfectly to every hand.

AS-55 / 60

- DRY/SLIDE CUT ets
- Material:Cobalt
- Handle of material:SUS304
- Convex edge,Offset Handle

AS-55 Inchi:5.5 A:67mm B:93mm Weight:about 53g

AS-60 Inchi:6.0 A:77mm B:93mm Weight:about 57g



AI-55 / 60

- DRY/SLIDE CUT ets
- Material:Cobalt
- Handle of material:SUS304
- Convex edge,3D Handle

AI-55 Inchi:5.5 A:67mm B:98mm Weight:about 59g

AI-60 Inchi:6.0 A:77mm B:98mm Weight:about 63g

※ Left-handed version also available.



Mogul Series

The Mogul series offers a smooth, free form. Anyone can pick these up and start cutting in just the way they choose. These scissors are particularly designed for freestyle cutting of dry hair.

MI-55 / 60 / 65

- DRY/WET/ALL CUT
- Material:Cobalt
- Handle of material:SUS304
- Convex edge,3D Handle

MI-55 Inchi:5.5 A:64mm B:98mm Weight:about 54 g

MI-60 Inchi:6.0 A:74mm B:98mm Weight:about 58 g

MI-65 Inchi:6.5 A:84mm B:98mm Weight:about 63 g

※ Left-handed version also available.



MM-55 / 60 / 65

- DRY/WET/ALL CUT
- Material:Cobalt
- Handle of material:SUS304
- Convex edge,Opposing Handle

MM-55 Inchi:5.5 A:64mm B:94mm Weight:about 57 g

MM-60 Inchi:6.0 A:74mm B:94mm Weight:about 61 g

MM-65 Inchi:6.5 A:84mm B:94mm Weight:about 65 g

※ Left-handed version also available.



MS-55 / 60 / 65

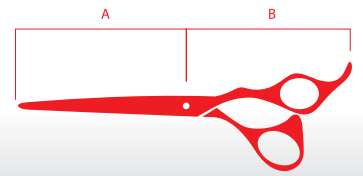
- DRY/WET/ALL CUT
- Material:Cobalt
- Handle of material:SUS304
- Convex edge,Offset Handle

MS-55 Inchi:5.5 A:64mm B:91mm Weight:about 52 g

MS-60 Inchi:6.0 A:74mm B:91mm Weight:about 55 g

MS-65 Inchi:6.5 A:84mm B:91mm Weight:about 59 g





Ymir Series

These scissors are named after a giant that appears in Norse mythology. One story says that he created this earth, and much like that tale, these scissors create a world of beauty.

YI-55 / 60

- DRY/WET/CRAB CUT ets
- Material:Cobalt
- Handle of material:SUS304
- Convex edge,3D Handle

YI-55 Inchi:5.5 A:66mm B:100mm Weight:about 57 g

YI-60 Inchi:6.0 A:76mm B:100mm Weight:about 61 g

※ Left-handed version also available.



YM-55 / 60

- DRY/WET/CRAB CUT ets
- Material:Cobalt
- Handle of material:SUS304
- Convex edge,Opposing Handle

YM-55 Inchi:5.5 A:66mm B:94mm Weight:about 53 g

YM-60 Inchi:6.0 A:76mm B:94mm Weight:about 57 g

※ Left-handed version also available.



YS-55 / 60

- DRY/WET/CRAB CUT ets
- Material:Cobalt
- Handle of material:SUS304
- Convex edge,Offset Handle

YS-55 Inchi:5.5 A:66mm B:92mm Weight:about 51 g

YS-60 Inchi:6.0 A:76mm B:92mm Weight:about 54 g



Highness Series

These scissors derive their name from their traditional shape and they are good for any stylist and any type of cut. If you have just one pair of scissors, the "Almighty" Highness scissors are the best choice...they are to be treasured.

HY-50 / 55 / 60 / 65 / 70

- WET/CRAB CUT ets
- Material:Cobalt
- Handle of material:SUS304
- Convex edge,Offset Handle

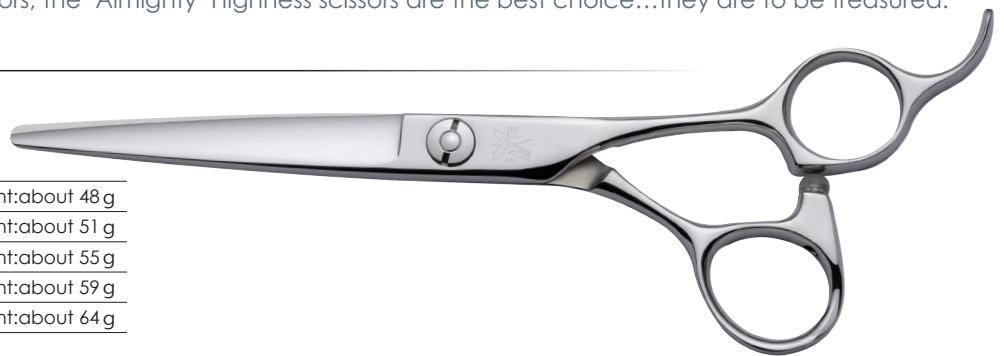
HY-50 Inchi:5.0 A:55mm B:81mm Weight:about 48 g

HY-55 Inchi:5.5 A:65mm B:87mm Weight:about 51 g

HY-60 Inchi:6.0 A:75mm B:91mm Weight:about 55 g

HY-65 Inchi:6.5 A:85mm B:91mm Weight:about 59 g

HY-70 Inchi:7.0 A:95mm B:91mm Weight:about 64 g



HM-50 / 55 / 60 / 65 / 70

- WET/CRAB CUT ets
- Material:Cobalt
- Handle of material:SUS304
- Convex edge,Opposing Handle

HM-50 Inchi:5.0 A:55mm B:86mm Weight:about 41 g

HM-55 Inchi:5.5 A:65mm B:92mm Weight:about 44 g

HM-60 Inchi:6.0 A:75mm B:95mm Weight:about 49 g

HM-65 Inchi:6.5 A:85mm B:95mm Weight:about 54 g

HM-70 Inchi:7.0 A:95mm B:95mm Weight:about 61 g



HR-50 / 55 / 60 / 65 / 70

- WET/CRAB CUT ets
- Material:Cobalt
- Handle of material:SUS304
- Convex edge,Offset Handle

HR-50 Inchi:5.0 A:55mm B:84mm Weight:about 45 g

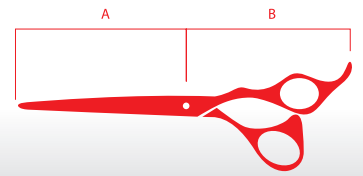
HR-55 Inchi:5.5 A:65mm B:90mm Weight:about 47 g

HR-60 Inchi:6.0 A:75mm B:92mm Weight:about 50 g

HR-65 Inchi:6.5 A:85mm B:92mm Weight:about 63 g

HR-70 Inchi:7.0 A:95mm B:92mm Weight:about 67 g





Retro Series

These are basic V-shape scissors. They are our basic/classic model.

VM-45 / 50 / 55 / 60

- WET/CRAB CUT ets
- Material:Cobalt
- Handle of material:SUS304
- Convex edge,Opposing Handle

VM-45 Inchi:4.5 A:49mm B:82mm Weight:about 35 g

VM-50 Inchi:5.0 A:56mm B:87mm Weight:about 39 g

VM-55 Inchi:5.5 A:66mm B:91mm Weight:about 44 g

VM-60 Inchi:6.0 A:74mm B:91mm Weight:about 48 g

※ Left-handed version also available.



Highness L Series

These are our Highness scissors specifically designed for left-handed stylists.They can be used for various cuts and styles. With the same high quality as our Highness series, these scissors are truly priceless.

IM-55 / 60 (left-handed)

- WET/CRAB CUT ets
- Material:Cobalt
- Handle of material:SUS304
- Convex edge,Opposing Handle

IM-55 Inchi:5.5 A:64mm B:92mm Weight:about 45 g

IM-60 Inchi:6.0 A:74mm B:92mm Weight:about 48 g



IY-55 / 60 (left-handed)

- WET/CRAB CUT ets
- Material:Cobalt
- Handle of material:SUS304
- Convex edge,Offset Handle

IY-55 Inchi:5.5 A:64mm B:89mm Weight:about 50 g

IY-60 Inchi:6.0 A:74mm B:89mm Weight:about 53 g



Nephtys Series

The material of these scissors is micro-powder. Each edge has strong sticking force because the surface of the edges is smooth. You can cut your hair smoothly and reduce damage on your hair.

TM-50 / 55

- WET/CRAB CUT/FRENCH CUT/EFFECTET CUT ets
- Material:Micro-powder Material
- Handle of material:SUS304
- Convex edge, Opposing Handle

TM-50 Inchi:5.0 A:55mm B:85mm Weight:about 38 g

TM-55 Inchi:5.5 A:65mm B:85mm Weight:about 42 g

※ Left-handed version also available.



Alamo Series

Alamo doesn't hurt the hair cuticle easily and improves your cutting skill with softly and elegantly cut.

WH-55 / 60

- WET/CRAB CUT/FRENCH CUT ets
- Material:Micro-powder Material
- Handle of material:SUS304
- Convex edge,3D Handle

WH-55 Inchi:5.5 A:65mm B:91mm Weight:about 51 g

WH-60 Inchi:6.0 A:75mm B:91mm Weight:about 55 g



Thinning Series

Multi-3in1 Series

These scissors can create multiple different styles. One pair of scissors yields three different cuts. These scissors are specifically made for those who like to create their own styles.

ZF-27

- 20%,30%,40% Cut out
- Material : Cobalt
- Handle of material : SUS304
- Convex edge,3D Handle
- BLADE:27 Teeth

Overall Length:171mm Weight:about 52g

※ Left-handed version also available.



Thinning Dial Setting (this feature allows you to set the thinning percentage).



II:20%



III:30%



IV:40%

- PAT. JP3136942
- PAT. TW339155
- PAT. GB2456591
- PAT. US8276278



Thinning Series

Wing Series

The Wing series employs the F.C. system which provides a smooth cut. The design allows you to cut to the very edge of the blade.

WN-28

- 30% ~ 35% Cut out
- Material : Cobalt
- Handle of material : SUS304
- Convex edge,3D Handle
- BLADE:28 Teeth

Overall Length:165mm Weight:about 55g

※ Left-handed version also available.



F.C system

This system provides movement with absolutely ZERO friction. It's a one-of-a-kind design.

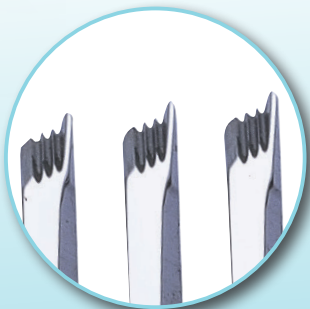
Eagle Series

The serated teeth of our Eagle scissors are reminiscent of an eagle's wings. These scissors create a sharp finish.

EI-23

- 20% Cut out
- Material : Cobalt
- Handle of material : SUS304
- Convex edge,3D Handle
- BLADE:23 Teeth

Overall Length:172mm Weight:about 61g



Sincere Series

These scissors are true to their name. They come with a quality assurance and are made with the care of a craftsman.

SI-15

- 20% ~ 40% Cut out
- Material : Cobalt
- Handle of material : SUS304
- Convex edge, 3D Handle
- BLADE: 15 Teeth

Overall Length: 172mm Weight: about 61g

※ Left-handed version also available.



SM-15

- 20% ~ 40% Cut out
- Material : Cobalt
- Handle of material : SUS304
- Convex edge, Opposing Handle
- BLADE: 15 Teeth

Overall Length: 167mm Weight: about 62g

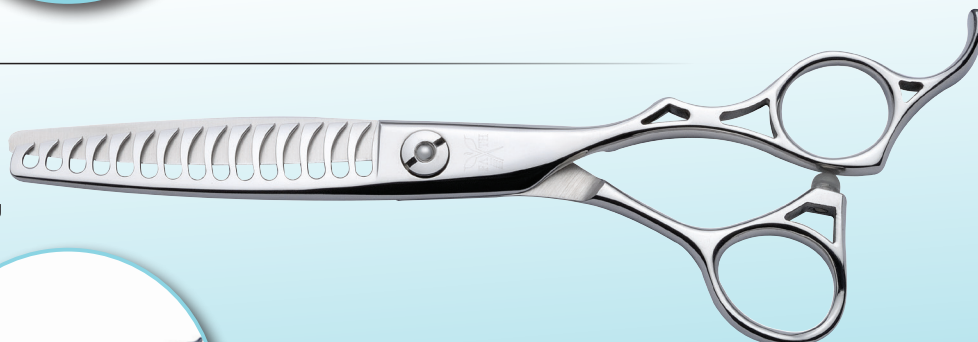
※ Left-handed version also available.



SS-15

- 20% ~ 40% Cut out
- Material : Cobalt
- Handle of material : SUS304
- Convex edge, Offset Handle
- BLADE: 15 Teeth

Overall Length: 167mm Weight: about 56g



Thinning Series

Shiny Series

Just as their name implies, this series was made to let the stylist's technique shine.

SI-21

- 15% ~ 30% Cut out
- Material : Cobalt
- Handle of material : SUS304
- Convex edge, 3D Handle
- BLADE: 21 Teeth

Overall Length: 172mm Weight: about 60g

※ Left-handed version also available.



SM-21

- 15% ~ 30% Cut out
- Material : Cobalt
- Handle of material : SUS304
- Convex edge, Opposing Handle
- BLADE: 21 Teeth

Overall Length: 167mm Weight: about 61g

※ Left-handed version also available.



SS-21

- 15% ~ 30% Cut out
- Material : Cobalt
- Handle of material : SUS304
- Convex edge, Offset Handle
- BLADE: 21 Teeth

Overall Length: 164mm Weight: about 56g



Modena Series

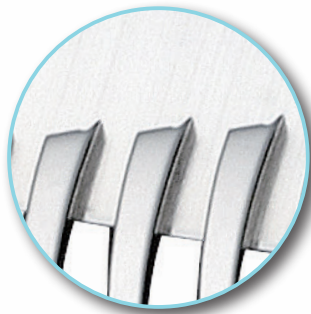
The Modena's artistic form helps the stylist give the customer the best hairstyle possible.

MI-28

- 20% ~ 25% Cut out
- Material : Cobalt
- Handle of material : SUS304
- Convex edge,3D Handle
- BLADE:28 Teeth

Overall Length:172mm Weight:about 63g

※ Left-handed version also available.



MM-28

- 20% ~ 25% Cut out
- Material : Cobalt
- Handle of material : SUS304
- Convex edge,Opposing Handle
- BLADE:28 Teeth

Overall Length:167mm Weight:about 62g

※ Left-handed version also available.



MS-28

- 20% ~ 25% Cut out
- Material : Cobalt
- Handle of material : SUS304
- Convex edge,Offset Handle
- BLADE:28 Teeth

Overall Length:164mm Weight:about 58g



Thinning Series

Skin Series

These thinning shears were designed to perform with a smoothness akin to the smoothness of beautiful skin.

SI-28

- 25% Cut out
- Material : Cobalt
- Handle of material : SUS304
- Convex edge, 3D Handle
- BLADE: 28 Teeth

Overall Length: 172mm Weight: about 59g

※ Left-handed version also available.

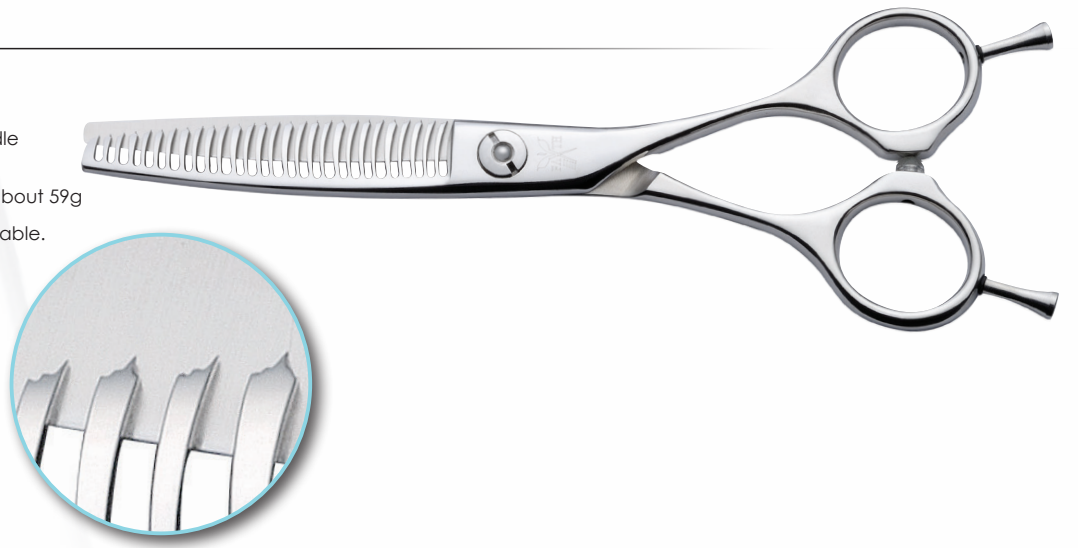


SM-28

- 25% Cut out
- Material : Cobalt
- Handle of material : SUS304
- Convex edge, Opposing Handle
- BLADE: 28 Teeth

Overall Length: 167mm Weight: about 59g

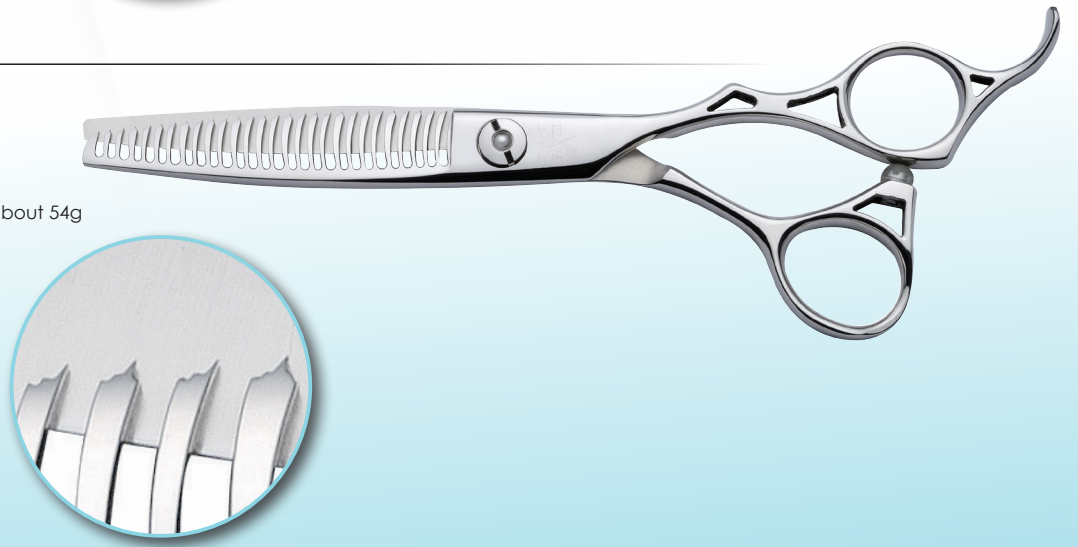
※ Left-handed version also available.



SS-28

- 25% Cut out
- Material : Cobalt
- Handle of material : SUS304
- Convex edge, Offset Handle
- BLADE: 28 Teeth

Overall Length: 164mm Weight: about 54g



Senior Series

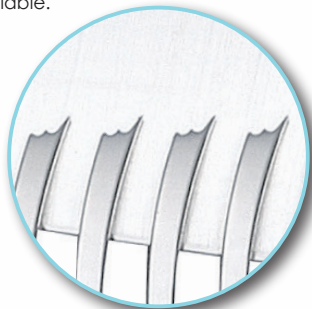
The word 'Senior' is used for someone who is older and has experience. This series of thinning shears will help you provide the best cut for your customers.

SM-30

- 25% Cut out
- Material : Cobalt
- Handle of material : SUS304
- Convex edge, Opposing Handle
- BLADE:30 Teeth

Overall Length:167mm Weight:about 51g

※ Left-handed version also available.

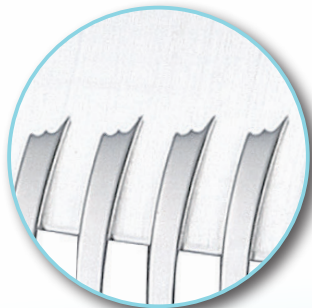


SY-30

- 25% Cut out
- Material : Cobalt
- Handle of material : SUS304
- Convex edge, Offset Handle
- BLADE:30 Teeth

Overall Length:162mm Weight:about 54g

※ Left-handed version also available.



SR-30

- 25% Cut out
- Material : Cobalt
- Handle of material : SUS304
- Convex edge, Offset Handle
- BLADE:30 Teeth

Overall Length:162mm Weight:about 55g



Thinning Series

Modify Series

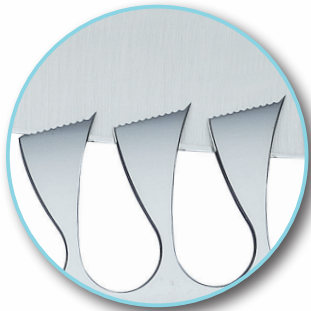
This style of scissors provides the opportunity for discovery and fun, new hairstyles. They allow you to give customers styles that feel consistently fresh and new.

MI-11

- 45% ~ 50% Cut out
- Material : Cobalt
- Handle of material : SUS304
- Convex edge, 3D Handle
- BLADE: 11 Teeth

Overall Length: 172mm Weight: about 63g

※ Left-handed version also available.

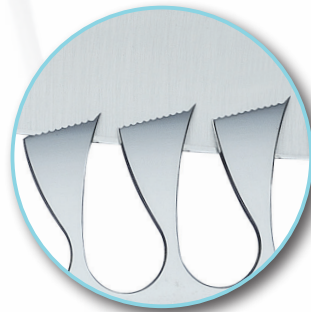


MM-11

- 45% ~ 50% Cut out
- Material : Cobalt
- Handle of material : SUS304
- Convex edge, Opposing Handle
- BLADE: 11 Teeth

Overall Length: 168mm Weight: about 61g

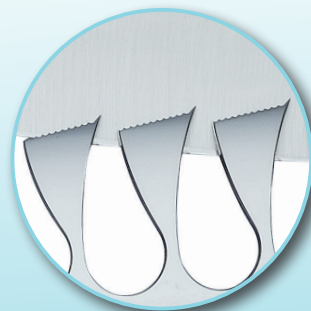
※ Left-handed version also available.



MS-11

- 45% ~ 50% Cut out
- Material: Cobalt
- Handle of material: SUS304
- Convex edge, Offset Handle
- BLADE: 11 Teeth

Overall Length: 164mm Weight: about 57g



Maina Series

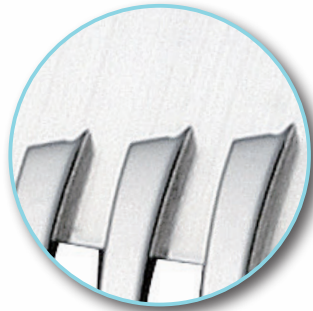
This is a slender version of the Modena series. The thin shape helps create a smoother cut than that of the basic thinning shears.

MIS-28

- 20% ~ 25% Cut out
- Material: Cobalt
- Handle of material: SUS304
- Convex edge, 3D Handle
- BLADE: 28 Teeth

Overall Length: 172 mm Weight: about 55g

※ Left-handed version also available.



MMS-28

- 20% ~ 25% Cut out
- Material: Cobalt
- Handle of material: SUS304
- Convex edge, Opposing Handle
- BLADE: 28 Teeth

Overall Length: 167mm Weight: about 56g

※ Left-handed version also available.



MSS-28

- 20% ~ 25% Cut out
- Material: Cobalt
- Handle of material: SUS304
- Convex edge, Offset Handle
- BLADE: 28 Teeth

Overall Length: 164mm Weight: about 51g



Thinning Series

Biko Series

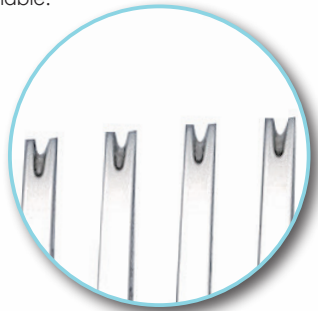
The slightly shiny Biko thinning shears have very thin teeth to give the hair a similarly subtle shine.

BM-30

- 25% Cut out
- Material:Cobalt
- Handle of material:SUS304
- Convex edge,Opposing Handle
- BLADE:30 Teeth

Overall Length:167mm Weight:about 56g

※ Left-handed version also available.

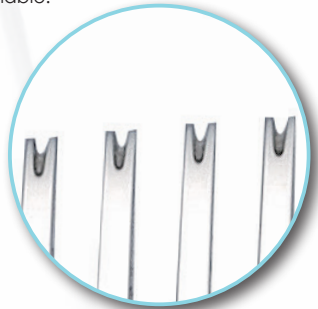


BY-30

- 25% Cut out
- Material:Cobalt
- Handle of material:SUS304
- Convex edge,Offset Handle
- BLADE:30 Teeth

Overall Length:162mm Weight:about 58g

※ Left-handed version also available.



BR-30

- 25% Cut out
- Material:Cobalt
- Handle of material:SUS304
- Convex edge,Offset Handle
- BLADE:30 Teeth

Overall Length:164mm Weight:about 59g



Isis Series

These scissors are made with the micro-powder material. Softly cut and very good cleanness support you to make your hairstyle more tasteful.

Isis has two uses. You can choose either according to your cut style.

JK-26

- 20% ~ 25% Cut out
- Material: Micro-powder Material
- Handle of material: SUS304
- Convex edge, Opposing Handle
- BLADE: 26 Teeth

Overall Length: 165 mm Weight: about 56g

※ Left-handed version also available.

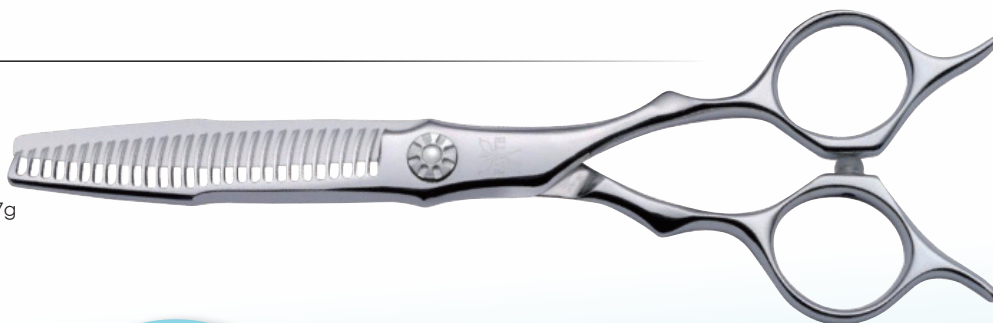


JK-28

- 20% ~ 25% Cut out
- Material: Micro-powder Material
- Handle of material: SUS304
- Convex edge, Opposing Handle
- BLADE: 28 Teeth

Overall Length: 165mm Weight: about 57g

※ Left-handed version also available.



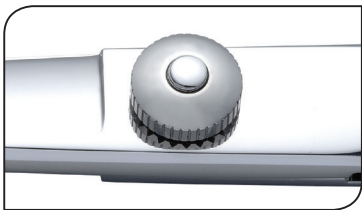
Option

Coating Processing

While highlighting the different features the scissors offer, the color coating also helps to protect your scissors. You can create your very own, unique pair of scissors by choosing from our various personalization options below.



Screw



FREE SCREW (MANUAL SCREW)

Using the 0.35mm screw, you can make small adjustments to the tension of the scissors. There is a tension lock that helps keep the blades from loosening.



PADDING SCREW

We've created a new type of screw that you can use to tighten the blades on your scissors when needed. This screw is directly implanted into the scissors creating a more compact feel.



COLOR LIGHT PADDING SCREW

The screw is made of lightweight metal for increased operativity.



Option 7 colors:

- Pink Gold
- Champagne Gold
- Pink
- Grey
- Red
- Royal Blue
- Purple

Aluminum finger rest/Aluminum pointer cover



Because we use aluminum, you can choose any color you'd like for your scissors. Please choose any color combination for your scissors and the screw.

Color Variation:

- Pink Gold
- Champagne Gold
- Pink
- Grey
- Red
- Royal Blue
- Purple

Special Options

We can fulfill various kinds of special orders.

• Notched Blades

Notched blades on one side are perfect to stop hair from slipping when performing a straight cut. We can offer this for scissors that are 6.5 inches with a blade that is 70mm.

• Add a metal bumper

When you open and close the scissors, they should make a "chk chk" noise.

• Pinky rest

Removable pinky rest with hole.

• Add Stones

Please contact us for more details about special orders.

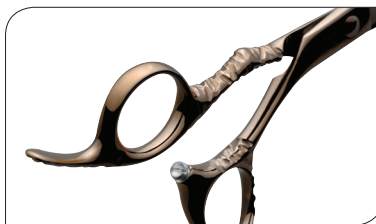


• Monogrammed

We can add a name in Roman letters beneath the screw. (Biggest font available is size 14). The name will be engraved with a razor, so it cannot be removed. We also manufacture scissors labeled for a private brand, salon or original series. Please inquire for details.

• Handle Engraving

We can add a stylish handle design.



※ Depending on the style of scissors, some of these processes may not be possible. Please inquire if you'd like more information about our offerings.

Scissors Report

Scissor Names and Diagram

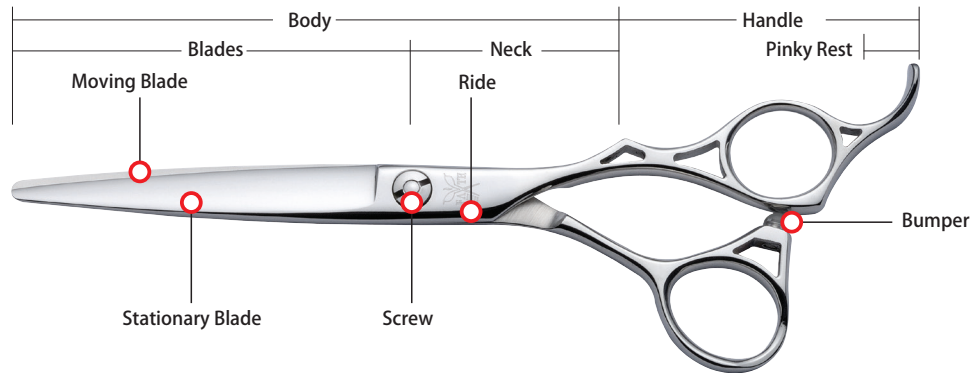


Diagram of blade shapes

There are three types of ripple marks on the scissors

Slight Clam Blade

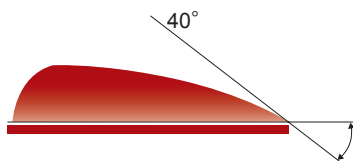


Diagram of the Blade Cross-Section (40 Degrees)

This is the sharpest angle blade that we make and it offers up an extremely sharp, slippery cut. The scissors were finished by a craftsman and they offer an artistic edge.

Clam Blade

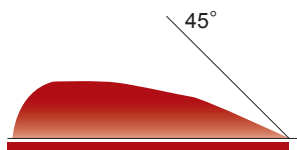


Diagram of the Blade Cross-Section (45 Degrees)

The 'Hamaguri' or 'Clam' is the finest blade design and requires the utmost skill and newest technology to make. The design allows for a consistent soft, sharp cut for any stylist.

Flat Blade (or Straight Blade)

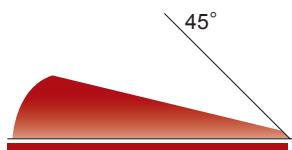


Diagram of the Blade Cross-Section (45 Degrees)

This blade is our most popular and the easiest to use. The body of the blade is flat, so it is easy to perform a light, simple cut.

Scissors Care & Maintenance

About your new scissors

When you begin using your new scissors, please break them in. We recommend that you avoid cutting extremely coarse hair. Aim to do 5-10 cuts on soft hair (whether it be wet or dry) first. We recommend doing only blunt cuts. Then, while consistently cleaning scissors with a chamois rag, once you have cut about 10-20 people you can begin performing slide cuts, stroke cuts and chops with the scissors.

Scissor Maintenance Tips

Please use the deerskin to wipe and clean the scissor every time after using it, if not, the lack of maintenance will influence the sharpness of scissor. Also, unnatural gesture will bring unbalanced pressure on the top of scissor. These 2 situations above are main reasons of the abrasion of scissor.



The best way to clean our scissors is to fully wipe one blade at a time from the base to the end with chamois leather. Place your thumb on top and pull down, away from you.

Thinning shears can be cleaned in the same way. Use chamois leather to wipe from the base of the blade to the tip, with your thumb on top pull away from you. Wipe the teeth from the inside to the outside.



Try to wipe your scissors with the chamois cloth several times a day, but the number can change depending on how much you use them. When wiping, fold two to four pieces of the leather so as to avoid cutting yourself.

Things to know about the scissors

1. Please do not loosen the screw when using scissors.
2. When opening and closing the scissors, if you press down on the moving blade with your thumb it can cause the scissors to move in an unbalanced way, which can make the scissors wear out quickly. Please try not to push down on the scissors when cutting.
3. Though we use materials that will not rust, please keep your shears away from hair chemicals and prolonged exposure to water. Letting chemicals set on any part of your shears may affect the surface. Be sure to rinse any chemical solutions from your shears immediately.
4. So as not to scratch or damage your scissors, please store your scissors in a case or on a stand when you are not using them.
5. When performing a cut, hair can get caught in the screw. Refer to the diagram below and apply a small amount of scissor oil to the blades.



FAITH